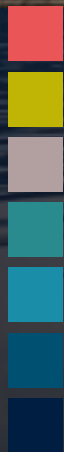




MYANMAR



contemporary yacht charter

MONCADA

1963

ITINERARY



MONCADA BROKERS' TIPS

Our next destination :)

If we talk about the Bay of Bengal, the name already evokes history and literature as well as nature and beauty. In that sea, among the many archipelagos we want to talk about the Mergui. There are 800 green and water-rich islands located between the coasts of Myanmar and Thailand.

Myanmar vacation is especially for snorkelers. In fact, it is possible to observe indescribable seabeds and many varieties of fish such as, among sharks, Guitar Sharks, Whale Sharks, Reef Sharks. Farms also find resident harlequin shrimp, frogfish and seahorses, as well as several species of shrimp and crabs. Nature is untouched.

The nomadic peoples of the islands the Moken are a shy and peace-loving tribe also known as the “Sea-Gypsies”. This tribe, which numbers just under 3,000 people, represents the indigenous population of the Mergui archipelago.



We have not yet managed to go personally but we have excellent correspondents on the spot who help us to make the holidays safe and unique.

Aloisa & Isabella Moncada

OUR TIPS


1963

MYANMAR



In the Andaman Sea, off the coast of Myanmar and Thailand and with over 800 islands lies the beautiful Mergui Archipelago. Myanmar and the archipelago have been completely isolated from the outside world for more than 50 years. Full of hidden gems, wonders and spectacular scenery you will find that this is one of the last paradises left on Earth.

The best way to explore this unspoiled territory of South East Asia is on a yacht charter vacation which allows easy access to the highlights of this cruising ground. Most of the islands are untouched and uninhabited. The nomadic Moken known as 'Sea Gypsies' are the only inhabitants in the area. Virgin rainforests with a stunning diversity of flora and fauna, perfect conditions for snorkeling, and diving... This is a sanctuary for avid adventurers.



Our journey begins from the border town of Kawthoung, between Thailand and Myanmar. Before embarking take a stroll through the fresh food market and try some of the local delicacies.

After a welcome reception, you will start your cruise along the Tenasserim coast and into the Andaman Sea. Discover a forgotten land that has been relatively untouched, since it was only opened to foreigners in the late 1990s. Your first stop will be Barwell Island where you can spend time swimming or enjoying some water sports before dinner and cocktails on board.

DAY 1

1963

KAWTHOUNG TO BARWELL ISLAND

Early morning cruise to Pulau Bada and visit a Moken Sea-Gypsy village. The Moken are a semi-nomadic tribe, who traditionally lived on hand-built wooden boats known as Kabang, coming ashore only during the wet months. The Moken are animists and have a great understanding and respect for their environment and natural resources.

Enjoy the gorgeous waterfront anchorage between three idyllic islands, Bada, Caws and Potter, blessed with abundant wildlife and beautiful beaches. Go to Poni Island's west beach and don't forget your snorkel equipment to explore the coral reefs. At the northern end of the beach, you will find a little mangrove river great for kayaking.



DAY 2

1963

PULAU BADA



Continue to Great Swinton Island, part of the Lampi National Park, one of the most popular and beautiful islands in the archipelago. The distinctive landscape here is characterized by lagoons, jungle-clad hills rich with wildlife, rivers, waterfalls and mangroves. There are also beautiful beaches, clear azure water and colourful reefs perfect for snorkeling.

The island has everything to keep you entertained: Great Swinton is perfect for kayaking or for stand up paddle boards with its calm waters and beautiful ocean views. The island also has excellent trails for jungle walks. On the southeast side take a short hike up the mountain past the Buddhist pagoda for an incredible view over the bay. At night relax on board and enjoy the extraordinary star filled sky.

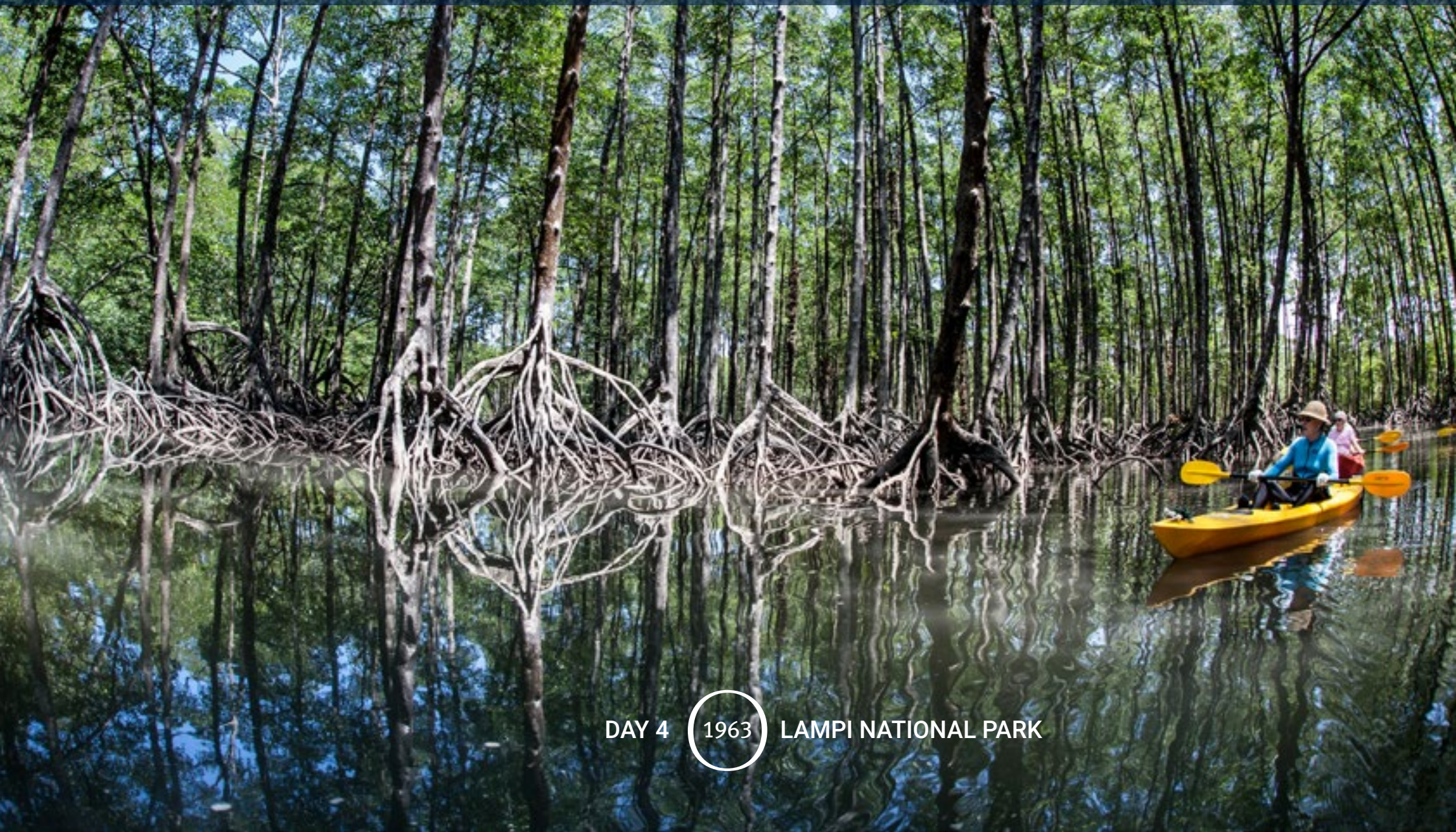
DAY 3

1963

GREAT SWINTON ISLAND

Today we sail and discover an important reserve of Myanmar, Lampi Island Marine National Park, a green treasure in the Andaman Sea. The park is a protected oasis rich in biodiversity and home to an incredible number of animals and birds with many different habitats from evergreen and mangrove forests to dunes, coral reefs, sea grasses and swamps.

Kayak through Lampi's majestic mangroves, one of the highlights of a park visit, or enjoy a jungle trek. Visit the islands around Lampi with their thriving bird life. Spend the night in a secluded bay and watch macaques play on the beach as they forage for food. On Pu Nala you will find a small village with a Buddhist temple. Go to Tar Yar Island and hear the songs of gibbons.



DAY 4

1963

LAMPI NATIONAL PARK



Today's destination is Clara Island, one of the most beautiful islands in the archipelago, also known as "Kalaya Kayun". The island lies on the western border of the Mergui archipelago and offers visitors stunning bays, waterfalls, rugged bolder formations and white sandy beaches fringed by pristine coral reefs.

You will arrive at Waterfall Bay on the northwest side of the island with white sand beaches and impossibly beautiful clear water. There is a spectacular waterfall nearby that tumbles into the ocean. The crystal coastline has an abundance of coves and bays to explore. Its well protected large bay offers a perfect overnight anchorage and there you can watch spectacular sunsets.

DAY 5

1963

CLARA ISLAND



Back again in Great Swinton Island and cruise through the northern coast for more snorkeling, water sports or enjoy some relaxed swimming.

Located two kilometres north of Great Swinton Island you will find Shark Cave, a renowned dive site where experienced divers can explore the colourful marine life. Here you may even see sharks up close, as nurse and grey reef sharks live in the underwater caves.

DAY 6

1963

GREAT SWINTON ISLAND



Our next stop is Lord Loughborough, a captivating and beautiful island covered in thick green jungle with a wide variety of flora and fauna. Home to one of the largest villages in the Mergui Archipelago and populated by Moken and other fishermen.

In the northwestern bay of the island you will find a small local school overlooking the ocean. Visitors are quite welcome and the children are very curious and friendly. Here you will also see one of the few pagodas to be found in the archipelago.

DAY 7

1963

LORD LOUGHBOROUGH ISLAND

Today you will visit the private island of Macleod which has the only resort on the island, Andaman Eco Resort. The private island retreat has a restaurant and a bar with delicious cocktails.

The island has soft white sandy beaches surrounded by untouched tropical wilderness and dense jungle ripe for exploration, guided kayaking trips through stunning caves and mangroves, a wealth of wildlife and exotic birds. Hike through the jungle to the top of the island and enjoy the spectacular views.



DAY 8

1963

MACLEOD ISLAND

Next you will arrive at Than Kyun, or Davis Island, the largest and highest of the Alladin Islands. The island is round shaped and surrounded by a reef with many small beaches to discover. It is densely wooded with two main peaks, each about 450 metres high.

Covered with lush rainforest this island offers an idyllic anchorage and a beautiful beach. Take a short walk inland and you will reach a freshwater stream cascading over the rocks into a pool where you can swim.



DAY 9

1963

DAVIS ISLAND

Today we will visit two of the most anticipated places of the cruise: Cocks Comb and Horseshoe Island. Our first stop is Cocks Comb, or Emerald Heart Island, a limestone atoll without a beach, but with a stunning lagoon resembling a heart. The colour of the water changes with the sea and is amazingly beautiful. Enter the lagoon by swimming through a natural tunnel. The sea inside is calm and perfect for snorkeling.

Continue cruising to your next destination, Horseshoe Island. Take your camera as you approach and immortalize the cliffs that give the island its horseshoe shape. Once ashore enjoy the limestone rocks, caves, corals, lagoon, white sand beaches and amazing flora and fauna.



DAY 10

1963

COCKS COMB & HORSESHOE ISLAND



Back in Kawthoung it is time to say goodbye to the crew and start thinking of your next charter destination.

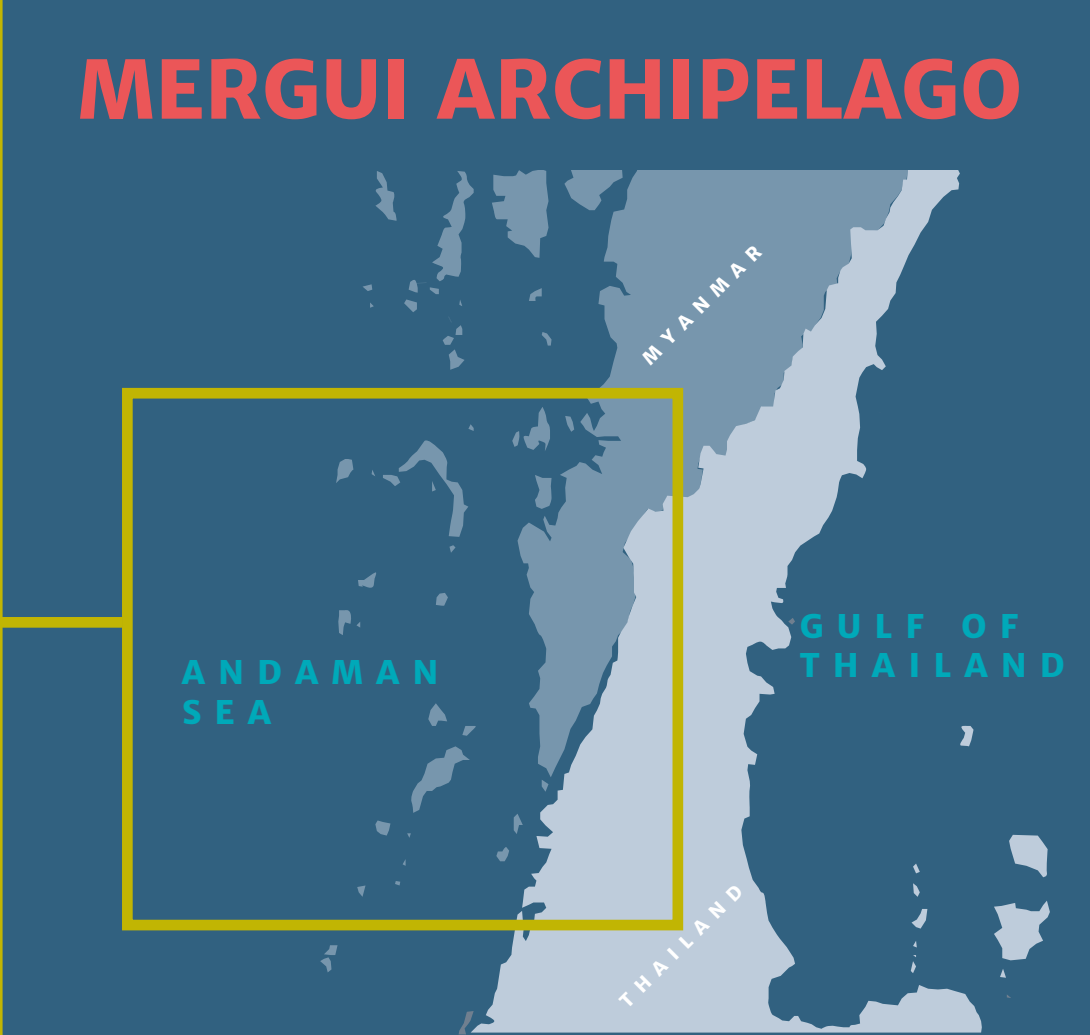
Once you disembark don't miss the chance to discover more of the country. Continue your journey and visit some of the many beautiful places on land including the ancient temples of Bagan in central Myanmar.

DAY 11

1963

KAWTHOUNG

MERGUI ARCHIPELAGO



Nearest Airports

Kawthaund air. connected with Bangkok
Yangon Int.Air.
Bangkok Int.Air.
Phuket Int.Air.

Language

Burmese Official
Others:
English

Currency

Burmese Kyat
1 EUR=1,532.80MMK
1 USD=1,305.22 MMK

Average air temperature

28°C-32°C
November-April

Average water temperature

26°C-29°C
November-April

Distances

Day 1: 16 nm
Day 2: 23 nm
Day 3: 13 nm
Day 4: 22 nm
Day 5: 16 nm
Day 6: 20 nm
Day 7: 8 nm
Day 8: 18 nm
Day 9: 20 nm
Day 10: 8 nm
Day 11: 23 nm

MERGUI ARCHIPELAGO

1963

USEFUL DATA