



ELECON

MONCADA

1963

3 Crew  
9 Sleeping Guests  
9 Cruising Guests



**Captain's Name:**  
Evaristo Pereira

**Captain's Nationality:**  
Spanish

ELECON



4 Cabins  
2 Double  
2 Twin  
Beds  
2 king  
4 Single  
1 Pullman

**Flag: Spanish**  
**Terms MYBA**

Length 26 m

Zero speed and underway stabilizers  
Fully equipped sundeck  
Air conditioning  
WiFi



Beam 6,32 m

Draft 1,68 m

Year built: **2002**

Builder: **Rizzardi Yachts- Posillipo**

Interior Designer: **Laura Baldoni de Gorga**

Naval Architect: **Zuccon International Project**

Hull Construction: **GRP**

Hull Configuration: **Planning hull**

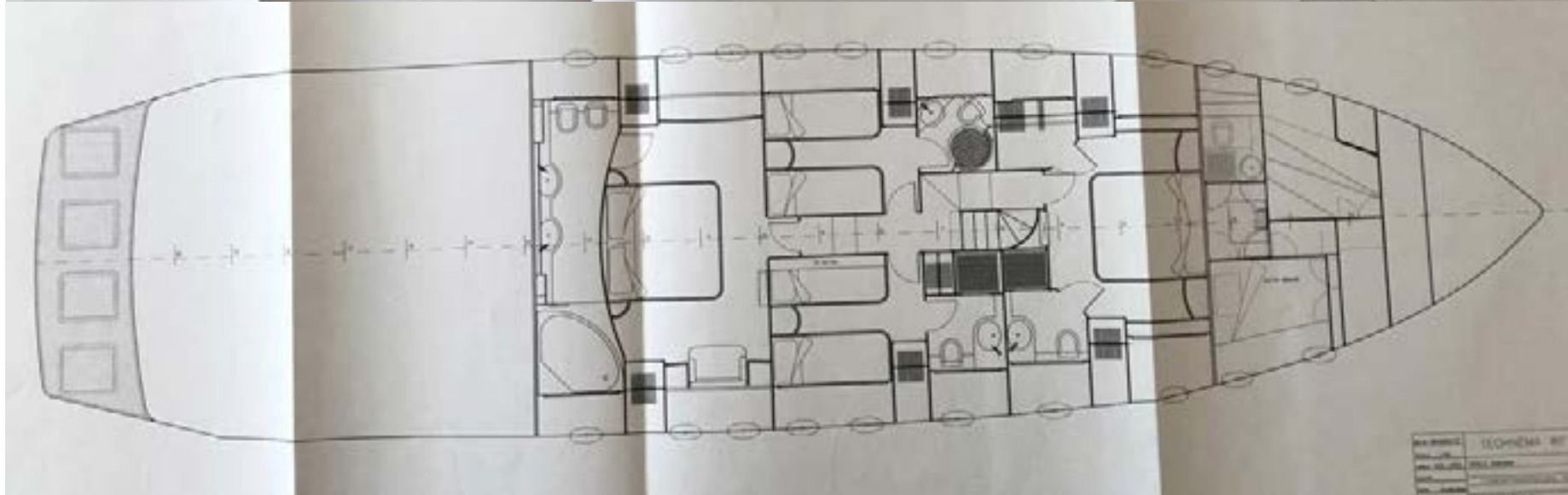
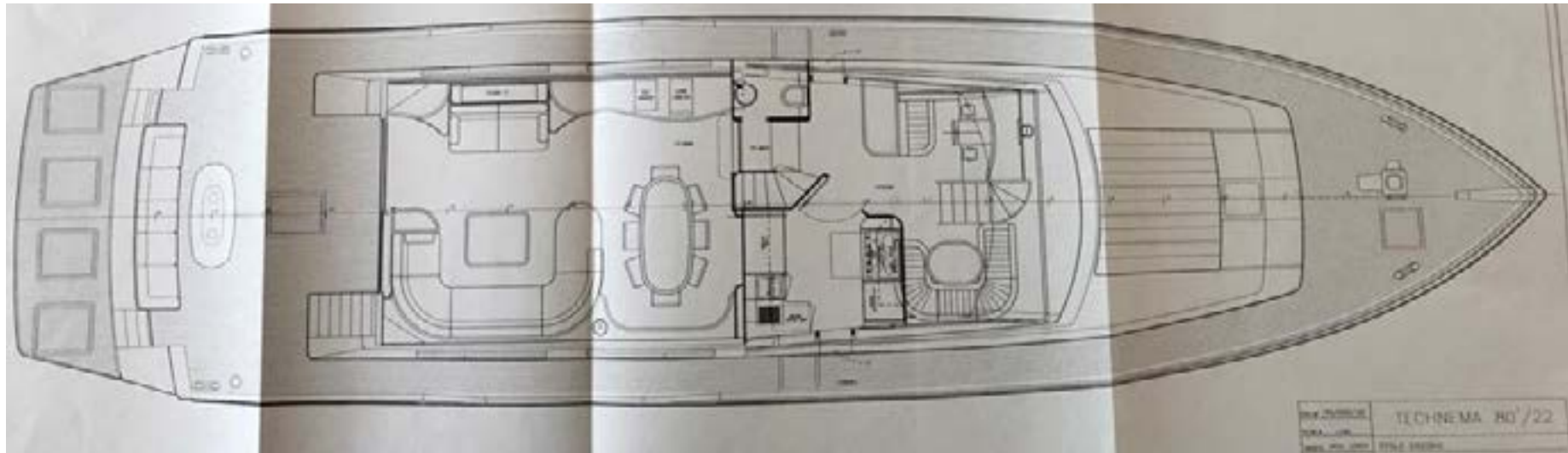
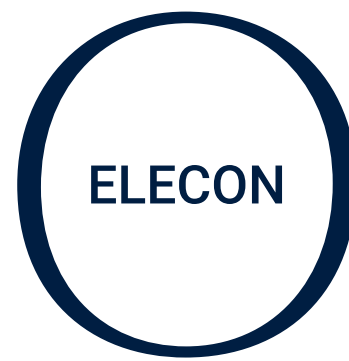
Cruising speed: **20 knots**

Charter rate: **High season 38.500€/week + all**

**Low season 31.500€/week + all**

MONCADA

1963





## MEDITERRANEAN WESTERN

This Season's Destinations:

Balearic Islands

## KEY FEATURES

**1 Excellent cruising performance**

**2 Spacious sundeck covered with a hard top**

**3 Great selection of water toys**

**4 Enthusiastic crew**

**5 Berth in Club the Mar included in the rate**

Luxury motor yacht Elecon is available for charter in the Balearics. Her home port is in the prestigious Club de Mar in Palma de Mallorca. She is a splendid 26 metre Technema 80, built in 2002 by the renowned and highly regarded Italian shipyard Posillipo-Rizzardi. Refit in 2014 she is in stunning condition and represents the best of Italian nautical tradition with her sleek design lines, powerful engines and state of the art technology.

Elecon provides accommodation for up to 9 guests in four spacious and luxurious en suite state rooms. She has a master cabin and VIP cabin, both with king sized beds, and 2 twin cabins, one with a Pullman berth. Elecon luxury motor yacht has an impressive interior designed by Tommaso Spadolini with beautiful furnishings and plenty of luxurious and comfortable seating choices for dining, relaxing and lounging. Every detail has been thought through and crafted with extreme precision resulting in a soft and soothing atmosphere both inside and on deck.

Elecon is an inviting choice for a luxury charter as she offers you and your guests a unique and unforgettable cruising experience. Her easy, stylish ambiance is ideal for recreation and relaxation for groups of friends or families. She has a wide range of water toys and equipment to make the most of the waters, including a Sea Doo RXP 300, one of the fastest jet skis on the market.

A notable feature on this superb motor yacht is the hardtop on the sundeck, an unusual addition on a Technema 80. Elecon has a professional highly trained crew of 3 onboard who are wholly dedicated to making your charter vacation a successful and memorable sojourn in the idyllic Balearic Islands.

M 1963 N C A D A





MONCADA MY ELECON

1963

AT ANCHOR



MONCADA MY ELECON

1963

SUNDECK





MONCADA MY ELECON

1963

AFT DECK





MONCADA MY ELECON

1963

SALON AND DINING





MONCADA MY ELECON 1963 DINING



MONCADA MY ELECON

1963

MASTER CABIN





MONCADA MY ELECON

1963

MASTER CABIN BATHROOM





MONCADA MY ELECON

1963

VIP CABIN





MONCADA MY ELECON

1963

TWIN CABIN WITH PULLMAN





MONCADA MY ELECON

1963

TWIN CABIN ENSUITE BATHROOM





MONCADA MY ELECON

1963

TWIN CABIN





MONCADA MY ELECON

1963

GALLEY





MONCADA MY ELECON

1963

BRIDGE

## **MONCADA YACHTS**

Avda Gabriel Roca 27 4º 2ª  
Spain, Palma de Mallorca, 07014  
Tel: +34 971684055

[charter@moncadayb.com](mailto:charter@moncadayb.com)

**[www.moncadayb.com](http://www.moncadayb.com)**

### **Disclaimer**

This document is not contractual. All specifications are given in good faith and offered for informational purposes only. The publisher and company do not warrant or assume any legal liability or responsibility for the accuracy, completeness, or usefulness of any information and/or images displayed. Yacht inventory, specifications and charter prices are subject to change without prior notice. None of the text and/or images used in this brochure may be reproduced without written consent from the publisher.